

THE MARION



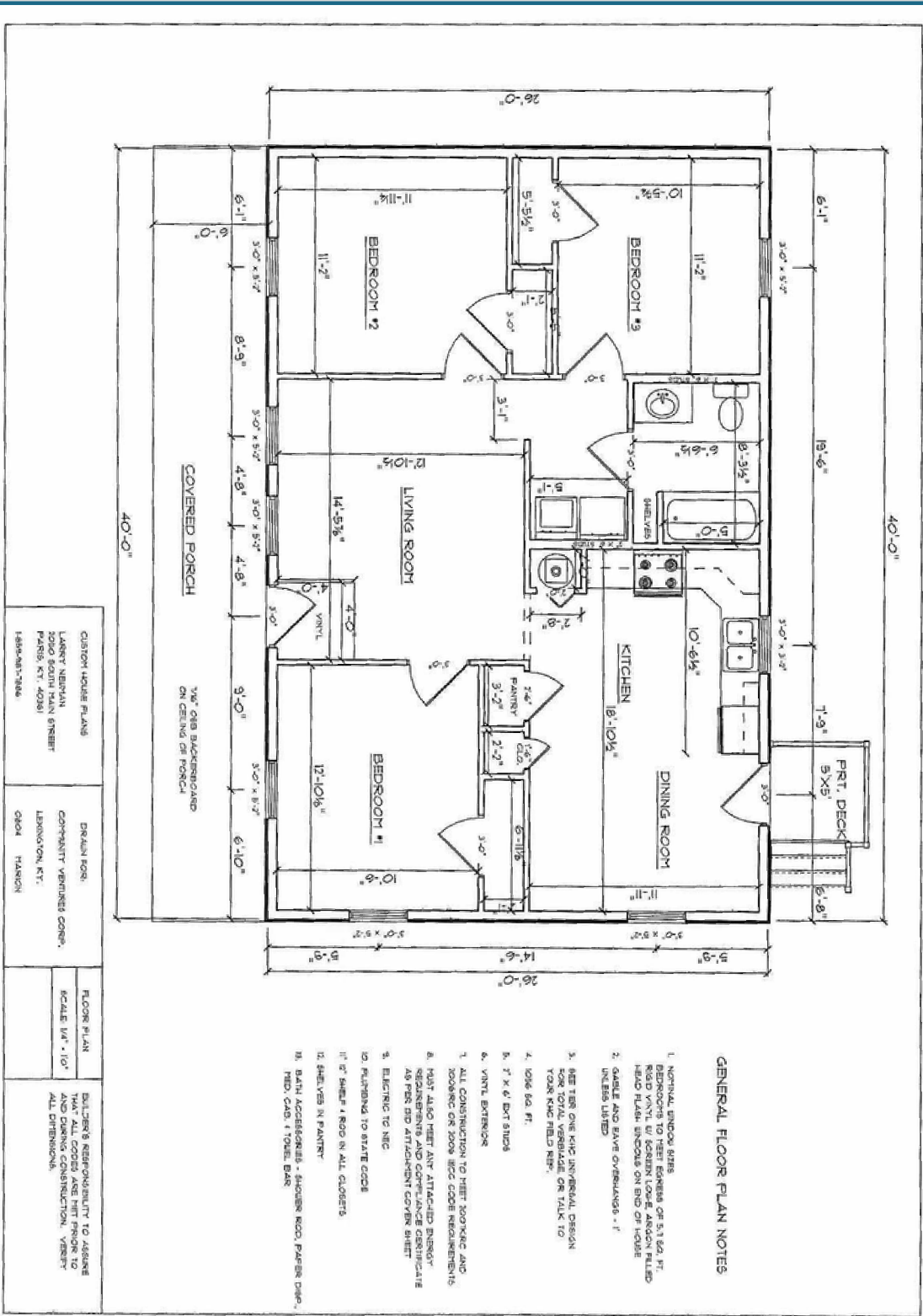
PRICE: \$148,000

SQUARE FOOTAGE: 1,040 SQ. FT.



community ventures
Your Dream. Our Mission.

THE MARION



GENERAL FLOOR PLAN NOTES

1. NORMAL WINDOW SHIMS TO BE USED UNLESS OTHERWISE NOTED. USE 1/2" SQUARE OR 1/2" SQ. RT. ROOF VENTS. USE SCREEN LOWER ANCHOR FILLED HEAD FLASH. ENDS ON END OF HOUSE UNLESS NOTED.
2. GABLE AND BAY OVERLANDS - 1" UNLESS NOTED.
3. MEET FOR ONE KING UNIVERSAL DESIGN FOR TOTAL VERGABLE OR TALK TO YOUR KING FIELD REP.
4. 1016 SQ. FT.
5. 2" X 6" BAY STUDS
6. VENT EXTERIOR
7. ALL CONSTRUCTION TO MEET BOYKING AND BOYKING OR 2008 IECC CODE REQUIREMENTS
8. MUST ALSO MEET ANY ATTACHED PARTY REQUIREMENTS AND COMPLIANCE CERTIFICATE AS PER BID ATTACHMENT COVER SHEET
9. ELECTRIC TO NEC
10. PLUMBING TO STATE CODE
11. 1" SHIMS 1 ROW IN ALL CLOSETS
12. SHELVES IN PANTRY
13. BATH ACCESSORIES - SHOWER KNOB, PAPER DISP., MED. CAB, TUBEL BAR

CUSTOM HOUSE PLANS LARRY NEWMAN 2000 SOUTH MAIN STREET FARMINGTON, CT. 06030 1-800-447-3334	DESIGN FOR: CORPENTY VENTURES CORP. LEONOVON, KY. CHAD HANCOCK	FLOOR PLAN SCALE 1/4" = 1'-0"	DESIGNER'S RESPONSIBILITY TO ASSURE THAT ALL CODES ARE MET PRIOR TO ANY DURING CONSTRUCTION, VERIFY ALL DIMENSIONS.